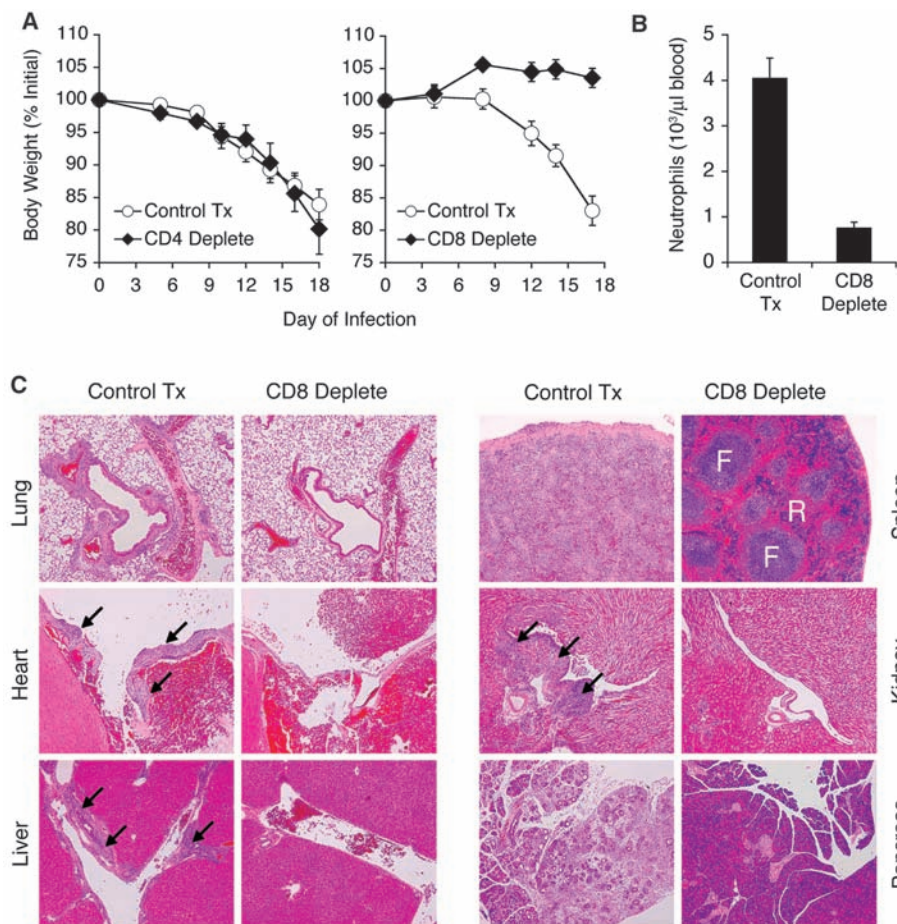


**Fig. 4.** CD8<sup>+</sup> T cell depletion prevents virus-induced wasting disease in Double KO mice. **(A)** Double KO mice were treated with phosphate-buffered saline ("Control Tx"), anti-CD4 ["CD4 Deplete," monoclonal antibody (mAb) GK1.5, 0.5 mg intraperitoneally (ip), left], or anti-CD8 ("CD8 Deplete," mAb 2.43, 0.5 mg ip, right) 1 day before, 1 day after, and every 3 days after LCMV infection. Weight at the indicated day after infection is displayed as a percentage of weight before infection. **(B)** Neutrophils were quantified in the blood of control or anti-CD8–treated mice at day 18 after infection by automated complete blood count with differential (right). Number of neutrophils per microliter of blood is depicted graphically. **(C)** H&E staining of organs from control-treated or CD8<sup>+</sup> T cell–depleted Double KO mice at day 18 after infection. Lung (airway with associated vessel), 10 $\times$ ; heart (base), 5 $\times$ ; liver (portal vessel), 5 $\times$ ; spleen (F, follicle; R, red pulp), 5 $\times$ ; kidney (hilum vessel near calyx), 5 $\times$ ; pancreas, 5 $\times$ . Arrows indicate immune cell infiltration. Values for (A) and (B) represent the mean  $\pm$  SEM of three individual mice per treatment group. Results are representative of two independent experiments.



25. A. M. Intlekofer *et al.*, *J. Exp. Med.* **204**, 2015 (2007).  
 26. We are grateful to E. Allenspach, S. Blackburn, J. Chang, D. Garalde-Intlekofer, I. Kinjyo, P. Mangan, V. Palanivel, F. Schambach, H. Yu, and Q. C. Yu for assistance and discussion. These studies were supported by National Institutes of Health (grants AI042370, AI061699,

AI076458, AI071309, AI042334, and AI007532) and the Abramson Family Cancer Research Institute.

**Supporting Online Material**  
[www.sciencemag.org/cgi/content/full/321/5887/408/DC1](http://www.sciencemag.org/cgi/content/full/321/5887/408/DC1)  
 Materials and Methods

Figs. S1 to S9  
 References

29 April 2008; accepted 11 June 2008  
 10.1126/science.1159806

## Riboswitches in Eubacteria Sense the Second Messenger Cyclic Di-GMP

N. Sudarsan,<sup>1</sup> E. R. Lee,<sup>2</sup> Z. Weinberg,<sup>2</sup> R. H. Moy,<sup>3</sup> J. N. Kim,<sup>2</sup> K. H. Link,<sup>1</sup> R. R. Breaker<sup>1,2,3\*</sup>

Cyclic di-guanosine monophosphate (di-GMP) is a circular RNA dinucleotide that functions as a second messenger in diverse species of bacteria to trigger wide-ranging physiological changes, including cell differentiation, conversion between motile and biofilm lifestyles, and virulence gene expression. However, the mechanisms by which cyclic di-GMP regulates gene expression have remained a mystery. We found that cyclic di-GMP in many bacterial species is sensed by a riboswitch class in messenger RNA that controls the expression of genes involved in numerous fundamental cellular processes. A variety of cyclic di-GMP regulons are revealed, including some riboswitches associated with virulence gene expression, pilus formation, and flagellum biosynthesis. In addition, sequences matching the consensus for cyclic di-GMP riboswitches are present in the genome of a bacteriophage.

The second messenger cyclic di-GMP (1–4) (fig. S1) is formed from two guanosine-5'-triphosphate molecules by diguanylate cyclase (DGC) enzymes. Once formed, the com-

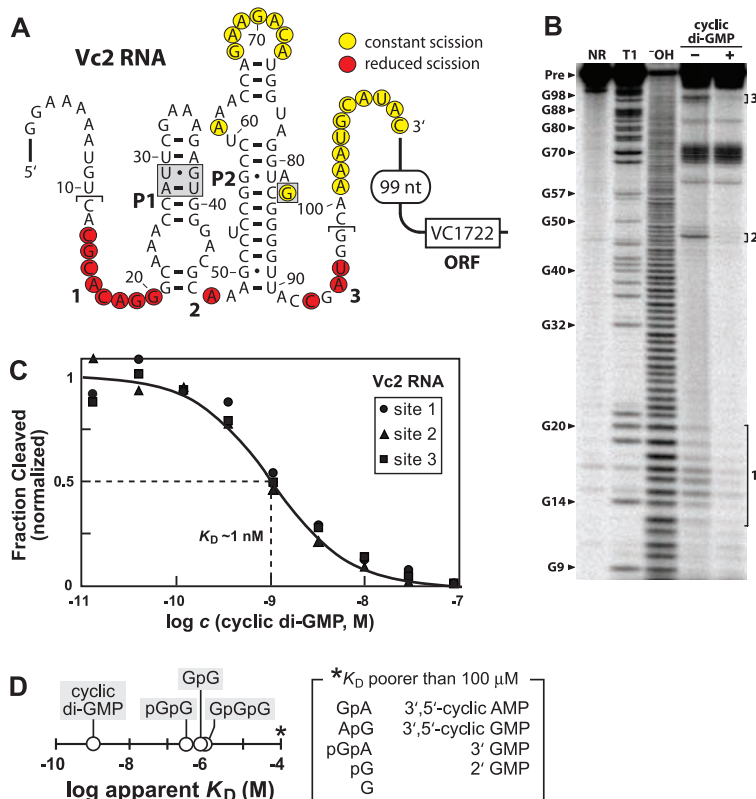
pound is degraded selectively by phosphodiesterase (PDE) enzymes that contain either EAL or HD-GYP amino acid domains (5). The activities of these synthesis and degradation enzymes are

triggered by various stimuli and modulate cellular cyclic di-GMP concentrations (4) to signal physiological changes. Cyclic di-GMP can be bound by some DGC proteins to allosterically repress its own synthesis (6, 7). The only other protein targets known are *Gluconacetobacter xylinus* cellulose synthase (8, 9), *Pseudomonas aeruginosa* PelD protein (10), and PilZ domain proteins (11). However, cyclic di-GMP binding presumably affects only the pathways in which these proteins participate, and therefore these interactions cannot fully explain its global cellular effects (3, 12).

It has been hypothesized (3) that the existence of cyclic di-GMP riboswitches could explain how

<sup>1</sup>Howard Hughes Medical Institute, Yale University, New Haven, CT 06520, USA. <sup>2</sup>Department of Molecular, Cellular and Developmental Biology, Yale University, New Haven, CT 06520, USA. <sup>3</sup>Department of Molecular Biophysics and Biochemistry, Yale University, New Haven, CT 06520, USA.

\*To whom correspondence should be addressed. E-mail: ronald.breaker@yale.edu



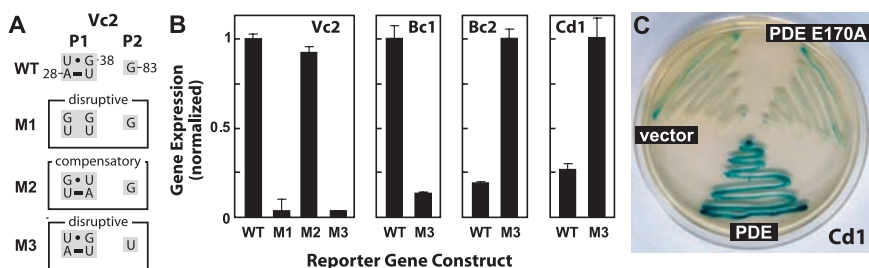
**Fig. 1.** A cyclic di-GMP aptamer from *V. cholerae*. **(A)** Sequence and structure of the Vc2 RNA from *V. cholerae* chromosome 2, and its proximity to the ORF of VC1722. Nucleotides shown correspond to the 110 Vc2 RNA construct. Bold numbers identify regions of ligand-mediated structure modulation as observed in **(B)**. Brackets identify the minimal 5' or 3' terminus (when the opposing terminus for 110 Vc2 RNA is retained) that exhibits structural modulation when tested with 10 nM cyclic di-GMP. Nucleotides in shaded boxes were mutated for studies depicted in Fig. 2A. Predicted G and U wobble pairs are identified with dots. **(B)** Polyacrylamide gel electrophoresis of RNA products generated by in-line probing of 5' <sup>32</sup>P-labeled 110 Vc2 RNA. NR, no reaction; T1, partial digest with RNase T1; OH, partial digest with alkali. RNA was incubated in the absence (–) or presence (+) of 100  $\mu$ M cyclic di-GMP. **(C)** Plot of the normalized fraction of 110 Vc2 aptamer cleaved versus cyclic di-GMP concentration. Sites of structural modulation are as depicted in **(B)**. **(D)** Comparison of  $K_D$  values exhibited by 110 Vc2 aptamer for cyclic di-GMP (fig. S5) and various analogs. G, guanosine; pG, pGpG, and pGpA, 5' phosphorylated mono- and dinucleotides; GpGpG, trinucleotide; AMP and GMP, adenosine and guanosine monophosphate, respectively.

this second messenger controls the transcription and translation of many genes. Riboswitches are mRNA domains that control gene expression in response to changing concentrations of their target ligand (13, 14). We have discovered a highly conserved RNA domain called GEMM (15) residing upstream of the open reading frames (ORFs) for DGC and PDE proteins in some organisms and residing upstream of some genes that are controlled by cyclic di-GMP. The high conservation and genomic distributions of GEMM RNAs are characteristic of riboswitches.

Most GEMM RNAs conform to one of two similar architectures termed type 1 and type 2 (fig. S2) that are distinguished by the presence of specific tetraloop and tetraloop receptor sequences (5). Both types carry two base-paired regions (P1 and P2) that exhibit extensive covariation in the 503 representatives identified (15). The genome of the pathogenic bacterium *Vibrio cholerae* carries two sequences for type 1 GEMM RNAs (fig. S3). One (Vc1) resides upstream of the *gfpA* gene, and a second (Vc2) resides upstream of a gene (VC1722) homologous to *foX* of *V. cholerae* (15, 16).

Biochemical and genetic analyses were carried out with both *V. cholerae* GEMM RNAs to determine whether they function as aptamers for cyclic di-GMP. A 110-nucleotide Vc2 RNA construct (110 Vc2) (Fig. 1A) was subjected to in-line probing (17) in the absence or presence of 100  $\mu$ M cyclic di-GMP (Fig. 1B). The changing patterns of spontaneous cleavage at the base of stems P1 and P2 suggest that the conserved nucleotides near the regions undergoing structural modulation (labeled 1 through 3) are important for ligand binding. Similar results were obtained for a construct encompassing the Vc1 RNA and for representative cyclic di-GMP aptamers from *Bacillus cereus* and *Clostridium difficile*. Despite the constrained structure of the second messenger, cyclic di-GMP exhibited a half-life for spontaneous degradation of no poorer than ~150 days under in-line probing conditions (fig. S4). Therefore, the biologically relevant ligand for this aptamer class most likely is cyclic di-GMP and not one of the breakdown products of this second messenger.

The 110 Vc2 RNA appeared to form a one-to-one saturable complex with a dissociation constant ( $K_D$ ) of ~1 nM for cyclic di-GMP (Fig. 1C and fig. S5). This interaction was nearly three orders of magnitude tighter than the affinity measured for cyclic di-GMP binding by an *Escherichia coli* PilZ protein domain [ $K_D$  = 840 nM (11)]. Furthermore, various analogs of the second messenger were strongly discriminated against by the Vc2 aptamer (Fig. 1D). The linear breakdown product of cyclic di-GMP by EAL PDEs (1–3), pGpG, was bound less tightly by the aptamer by nearly three orders of magnitude. Similarly, the pG (5' GMP) product of HD-GYP PDEs was not bound by the



**Fig. 2.** Representative cyclic di-GMP aptamers are components of gene control elements. **(A)** Reporter fusion constructs carry wild-type (WT) or mutant (M1 through M3) riboswitches from *V. cholerae* (Vc2) in *E. coli*, or carry the equivalent WT and M3 riboswitches from *B. cereus* (Bc1 and Bc2) or *C. difficile* (Cd1) (fig. S6) in *B. subtilis*. **(B)**  $\beta$ -Galactosidase reporter gene assays for reporter fusion constructs described in **(A)**. Maximum Miller units measured for the four aptamer representatives were 436, 47, 5, and 51, respectively. **(C)** *B. subtilis* cells carrying a  $\beta$ -galactosidase reporter construct fused to a wild-type Cd1 riboswitch and transformed with a plasmid lacking or carrying a normal or mutant (E170A) *V. cholerae* *vieA* gene encoding an EAL PDE. Plate diameter, 85 mm.

aptamer even at a concentration five orders of magnitude higher than the  $K_D$  for cyclic di-GMP.

Bacterial riboswitches typically carry a conserved aptamer located immediately upstream of a less well-conserved expression platform. Most expression platforms in bacteria form structures that control transcription termination or translation initiation (18). Similar architectures are associated with many GEMM RNA representatives (5), which suggests that cyclic di-GMP aptamers are likely to be components of riboswitches. Four 5' untranslated regions from *V. cholerae*, *B. cereus*, and *C. difficile* were examined for riboswitch function in cells. DNAs encompassing Vc2, its predicted native promoter, and the adjoining expression platform were used to prepare translational fusions with the *E. coli lacZ* reporter gene. Transformed *E. coli* cells carrying the aptamer-reporter fusion constructs were grown in liquid medium and assayed for  $\beta$ -galactosidase activity.

The reporter construct carrying the wild-type Vc2 aptamer (Figs. 1A and 2A) exhibited a high level of gene expression (Fig. 2B). In contrast, constructs M1 and M3 that carried mutations disrupting P1 or altering an otherwise strictly conserved nucleotide in the P2 bulge expressed the reporter gene at less than 10% of the wild-type level. Furthermore, an aptamer that carried four compensatory mutations (M2) that restore the structure of P1 exhibited near-wild-type gene expression. These results parallel the ligand-binding activities of these RNAs and suggest that the riboswitch integrating the Vc2 aptamer functions as an "on" switch. Similarly, transcriptional fusions were prepared for cyclic di-GMP riboswitches from *B. cereus* (Bc1 and Bc2) and *C. difficile* (Cd1) (fig. S6) and cloned into *B. subtilis*. The expression patterns for wild-type and equivalent M3 variants were consistent with "on" switch function for Bc1 and "off" switch function for Bc2 and Cd1 (Fig. 2B).

Cyclic di-GMP riboswitch modulation of gene expression was established by examining "off" switch action of the Cd1 RNA. The cellular concentration of the second messenger was manipulated by expression of *V. cholerae* VieA, an EAL PDE that is expected to lower the cellular concentration of cyclic di-GMP by promoting hydrolysis to its linear pGpG form (19). The Cd1 riboswitch is located in the 5' untranslated region of a large operon that encodes the proteins required to construct the entire flagella apparatus of this species (table S1). This arrangement suggests that some bacteria use a riboswitch to sense changes in cyclic di-GMP concentrations and regulate organelle biosynthesis to control motile versus sessile lifestyle transformations.

Transformed *B. subtilis* cells carrying a transcriptional fusion of the wild-type Cd1 riboswitch with *lacZ*, and grown on agar plates with X-gal, exhibited low  $\beta$ -galactosidase activity when

cotransformed with either the empty plasmid vector or the vector coding for the inactive Glu<sup>170</sup> → Ala (E170A) VieA mutant (Fig. 2C). In contrast, robust  $\beta$ -galactosidase activity was evident in cells cotransformed with the reporter construct and the vector coding for VieA PDE. A similar trend was observed when these transformed cells were assayed from liquid culture, whereas a reporter construct carrying the M3 mutation in the Cd1 aptamer remained largely unaffected by VieA activity (fig. S7). Moreover, cyclic di-GMP caused transcription termination of the Cd1 RNA in an in vitro transcription assay (fig. S8). These observations suggest that *C. difficile* uses the Cd1 riboswitch to regulate transcription of the flagellar protein operon to control motility in response to cyclic di-GMP signaling.

The *VC1722* gene associated with the Vc2 riboswitch codes for a protein similar to a known transcription factor that is important for competence (16). A *V. cholerae* mutant producing a rugose phenotype was found to have elevated cyclic di-GMP levels as well as higher expression of the *VC1722* mRNA (20, 21). This is consistent with our data indicating that the Vc2 riboswitch associated with the *VC1722* mRNA is a genetic "on" switch that yields higher gene expression when cyclic di-GMP concentrations are elevated (Fig. 2C).

The remaining *V. cholerae* cyclic di-GMP riboswitch (Vc1; fig. S3) is associated with the *gpbA* gene, which codes for a sugar-binding protein reported to be the key determinant permitting the bacterium to colonize mammalian intestines, leading to cholera disease (22). It has been shown that *V. cholerae* lowers its cyclic di-GMP levels when colonizing mammalian host intestines (19). The *V. cholerae* *vieA* gene used in our study to demonstrate Cd1 riboswitch response to changing cyclic di-GMP levels (Fig. 2C) is known to be essential for bacterial infection. Thus, it is possible that a reduction in cyclic di-GMP levels brought about by the action of VieA is sensed by the Vc1 riboswitch to facilitate expression of GbpA and *V. cholerae* infection.

Some organisms have a strikingly high number of cyclic di-GMP riboswitch representatives (fig. S3) (5). *Geobacter uraniumreducens*, with 30 representatives identified, has the largest number of cyclic di-GMP aptamer RNAs among bacterial species whose genomes have been sequenced. These are distributed upstream of 25 different transcriptional units, with five RNAs carrying tandem cyclic di-GMP aptamers. Also intriguing is the identification of cyclic di-GMP riboswitch representatives residing within PhiCD119 bacteriophage DNA that is integrated within the *C. difficile* genome. The riboswitch sequence, located within the lysis module of the bacteriophage genome, is also evident in DNA packaged into bacteriophage particles (23). Although more than 20 metabolite-sensing riboswitch classes have been reported, and thousands of representatives of

these classes have been identified, the cyclic di-GMP-binding RNAs are the only examples of bacteriophage-associated riboswitches found after exhaustive bioinformatics searches. Perhaps viruses have little need for sensing fundamental metabolic products, but might gain an evolutionary advantage by monitoring the physiological transformations of bacterial cells brought about by changing concentrations of the second messenger cyclic di-GMP.

## References and Notes

- U. Jenal, J. Malone, *Annu. Rev. Genet.* **40**, 385 (2006).
- R. P. Ryan, Y. Fouhy, J. F. Lucey, J. Maxwell Dow, *J. Bacteriol.* **188**, 8327 (2006).
- R. Tamayo, J. T. Pratt, A. Camilli, *Annu. Rev. Microbiol.* **61**, 131 (2007).
- R. Simm, M. Morr, A. Kader, M. Nimtz, U. Römling, *Mol. Microbiol.* **53**, 1123 (2004).
- See supporting material on Science Online.
- C. Chan *et al.*, *Proc. Natl. Acad. Sci. U.S.A.* **101**, 17084 (2004).
- P. Wassmann *et al.*, *Structure* **15**, 915 (2007).
- P. Ross *et al.*, *FEBS Lett.* **186**, 191 (1985).
- R. Simm *et al.*, *Nature* **325**, 279 (1987).
- V. T. Lee *et al.*, *Mol. Microbiol.* **65**, 1474 (2007).
- D. A. Ryjenkov, R. Simm, U. Römling, M. Gomelsky, *J. Biol. Chem.* **281**, 30310 (2006).
- A. J. Wolfe, K. L. Visick, *J. Bacteriol.* **190**, 463 (2008).
- W. C. Winkler, R. R. Breaker, *Annu. Rev. Microbiol.* **59**, 487 (2005).
- R. R. Breaker, *Science* **319**, 1795 (2008).
- Z. Weinberg *et al.*, *Nucleic Acids Res.* **35**, 4809 (2007).
- K. L. Meibom, M. Blokesch, N. A. Dolganov, C.-Y. Wu, G. K. Schoolnik, *Science* **310**, 1824 (2005).
- G. A. Soukup, R. R. Breaker, *RNA* **5**, 1308 (1999).
- J. E. Barrick, R. R. Breaker, *Genome Biol.* **8**, R239 (2007).
- R. Tamayo, A. D. Tischler, A. Camilli, *J. Biol. Chem.* **280**, 33324 (2005).
- B. Lim, S. Beyhan, J. Meir, F. H. Yildiz, *Mol. Microbiol.* **60**, 331 (2006).
- S. Beyhan, F. H. Yildiz, *Mol. Microbiol.* **63**, 995 (2007).
- T. J. Kirn, B. A. Jude, R. K. Taylor, *Nature* **438**, 863 (2005).
- R. Govind, J. A. Fralick, R. D. Rolfe, *J. Bacteriol.* **188**, 2568 (2006).
- We thank D. Rivera for assistance with experiments analyzing cyclic di-GMP stability and integrity. We also acknowledge the efforts of the FT-ICR Mass Spectrometry Resource of the Keck Biotechnology Resource Laboratory, and we thank N. Carriero and R. Bjornson for assisting with our use of the Yale Life Sciences High Performance Computing Center (NIH grant RR19895-02). Supported by NIH grants R33 DK07027 and GM 068819 (R.R.B.), National Institute of General Medical Sciences grant T32GM007223 (E.R.L.), an NSF predoctoral fellowship (J.N.K.), and National Heart, Lung, and Blood Institute grant HV28186. RNA research in the Breaker laboratory is also supported by the Howard Hughes Medical Institute. R.R.B. is a cofounder and member of the scientific advisory board of BioRelix. N.S., Z.W., and R.R.B. are listed as inventors on several patent applications related to riboswitch science.

## Supporting Online Material

www.sciencemag.org/cgi/content/full/321/5887/411/DC1  
Materials and Methods  
Figs. S1 to S12  
Tables S1 and S2  
References

23 April 2008; accepted 12 June 2008  
10.1126/science.1159519